

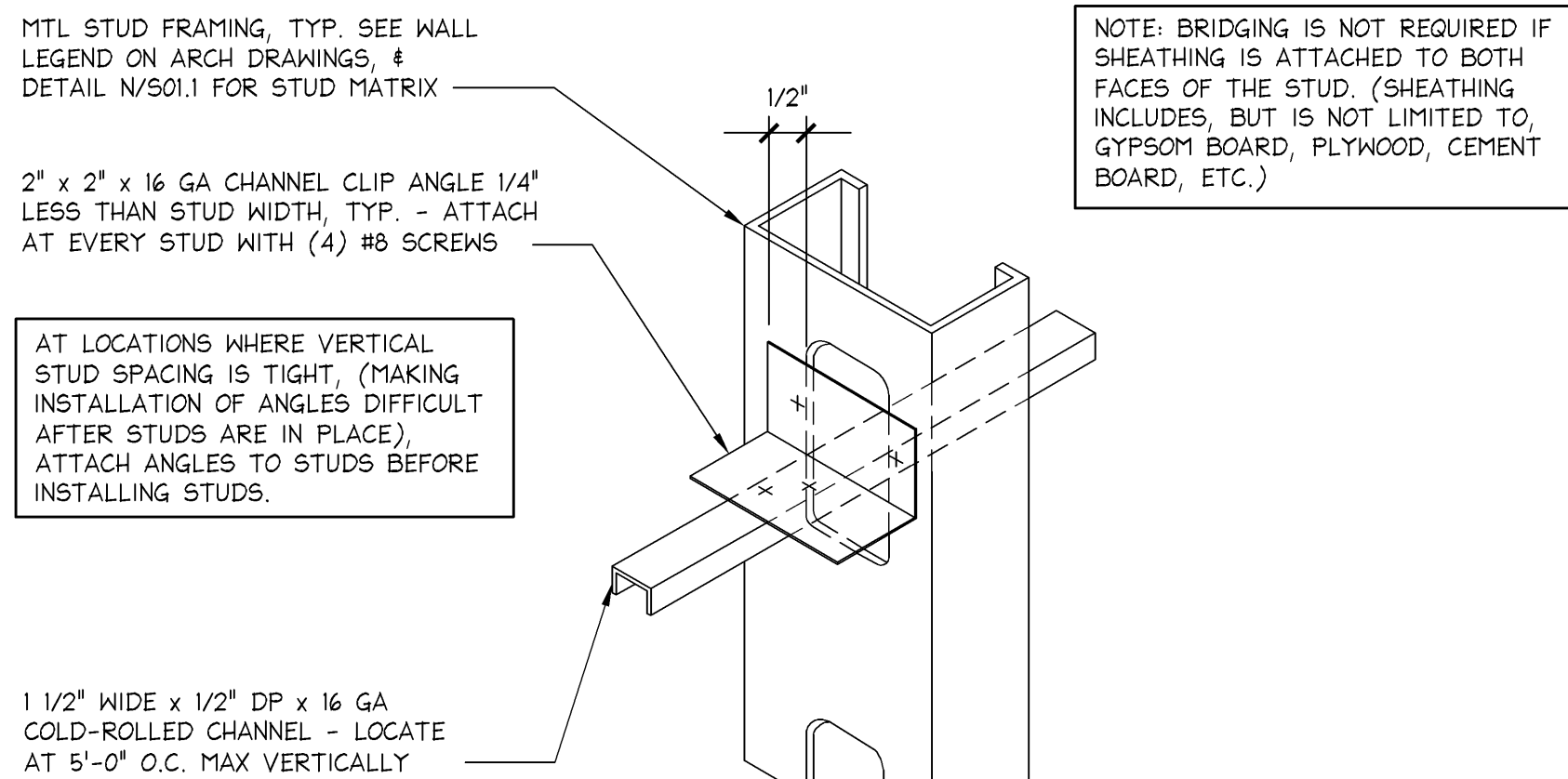
# SUSPENDED FRAMING DETAILS

1 1/2" = 1'-0"  
00D-S031-S00-DETL  
08.15.11

NOT USED

--  
--

H



# BRIDGING DETAIL

N.T.S.  
00D-S031-R00-DETL  
08.15.11

# DEFLECTION TRACK SEISMIC DESIGN CATEGORIES A, B & C

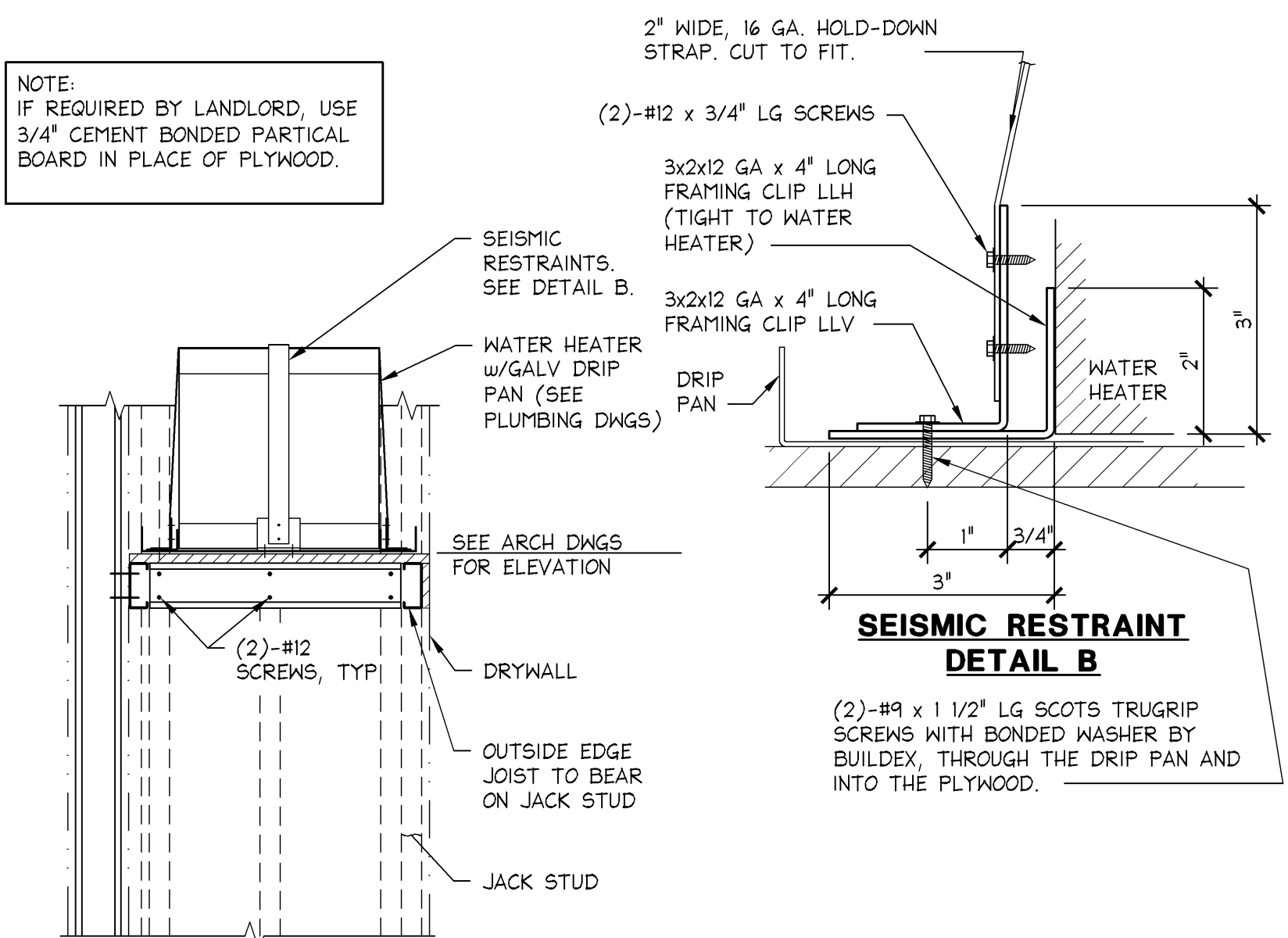
3" = 1'-0"  
00D-S031-L00-DETL  
08.15.11

# LIGHTGAGE LINTEL DETAIL

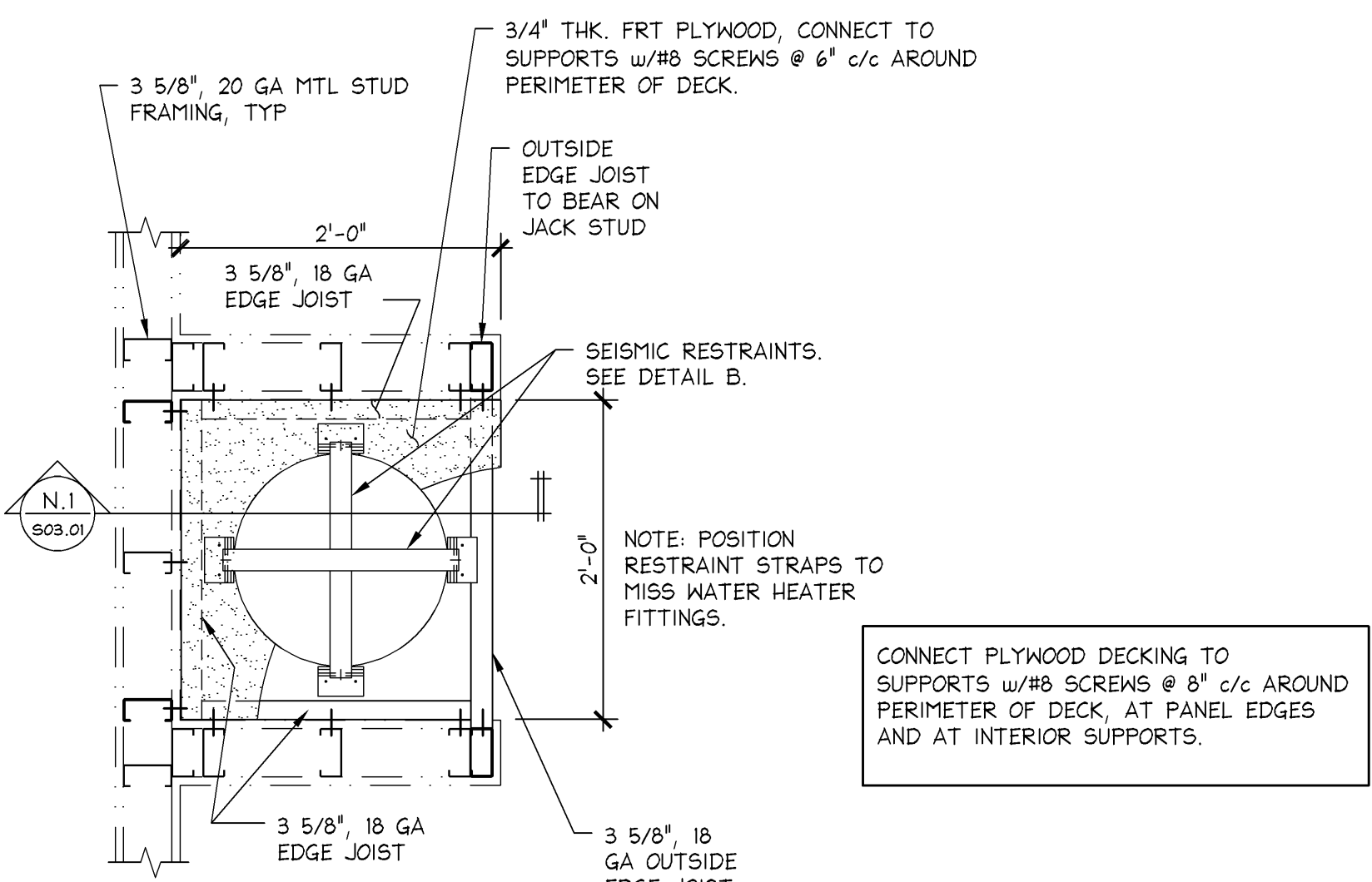
1" = 1'-0"  
00D-S031-G00-DETL  
08.15.11

# LIGHTGAGE BOX COLUMN DETAIL

3" = 1'-0"  
00D-S031-C00-COLM  
08.15.11



N1 SECTION  
1'-1'-0"



# WATER HEATER SUPPORT ON 2'-0" SQUARE LEDGE SEISMIC DESIGN CATEGORIES C, D, E & F

1" = 1'-0"  
00D-S031-N04-PLAT  
08.15.11

NOT USED

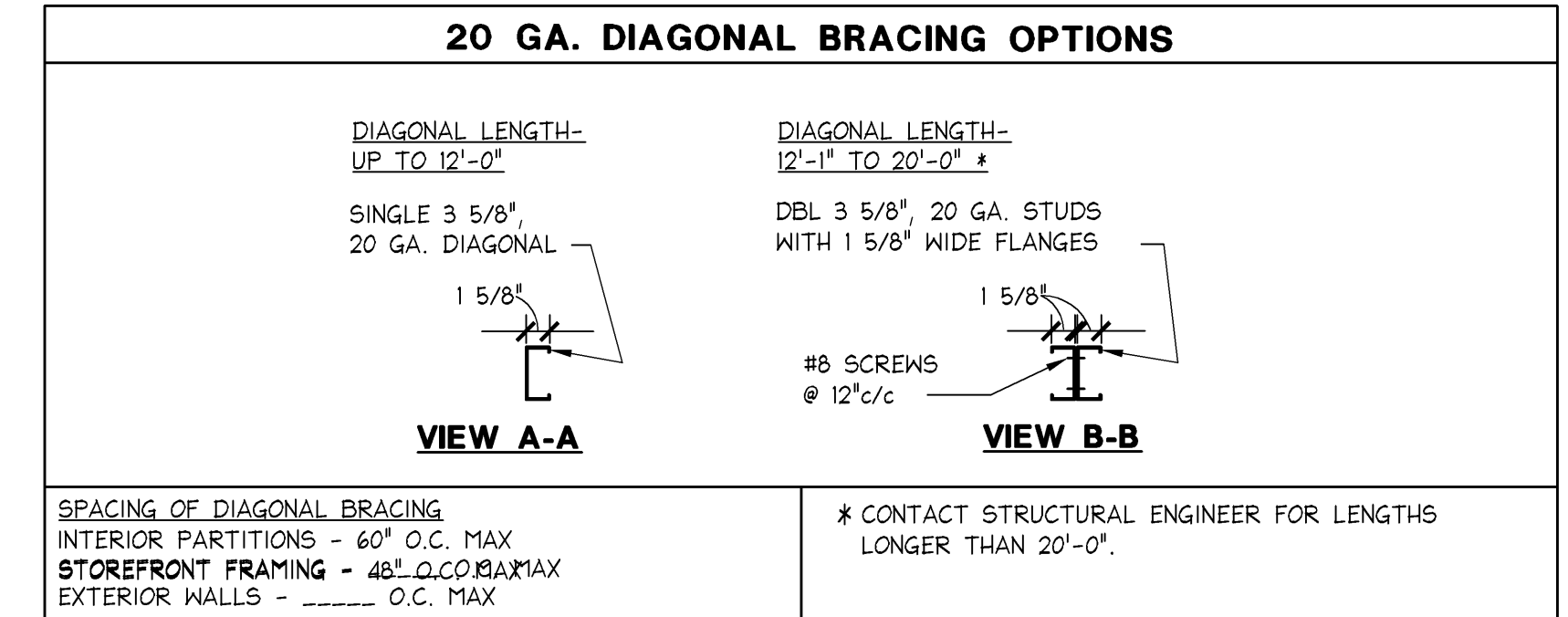
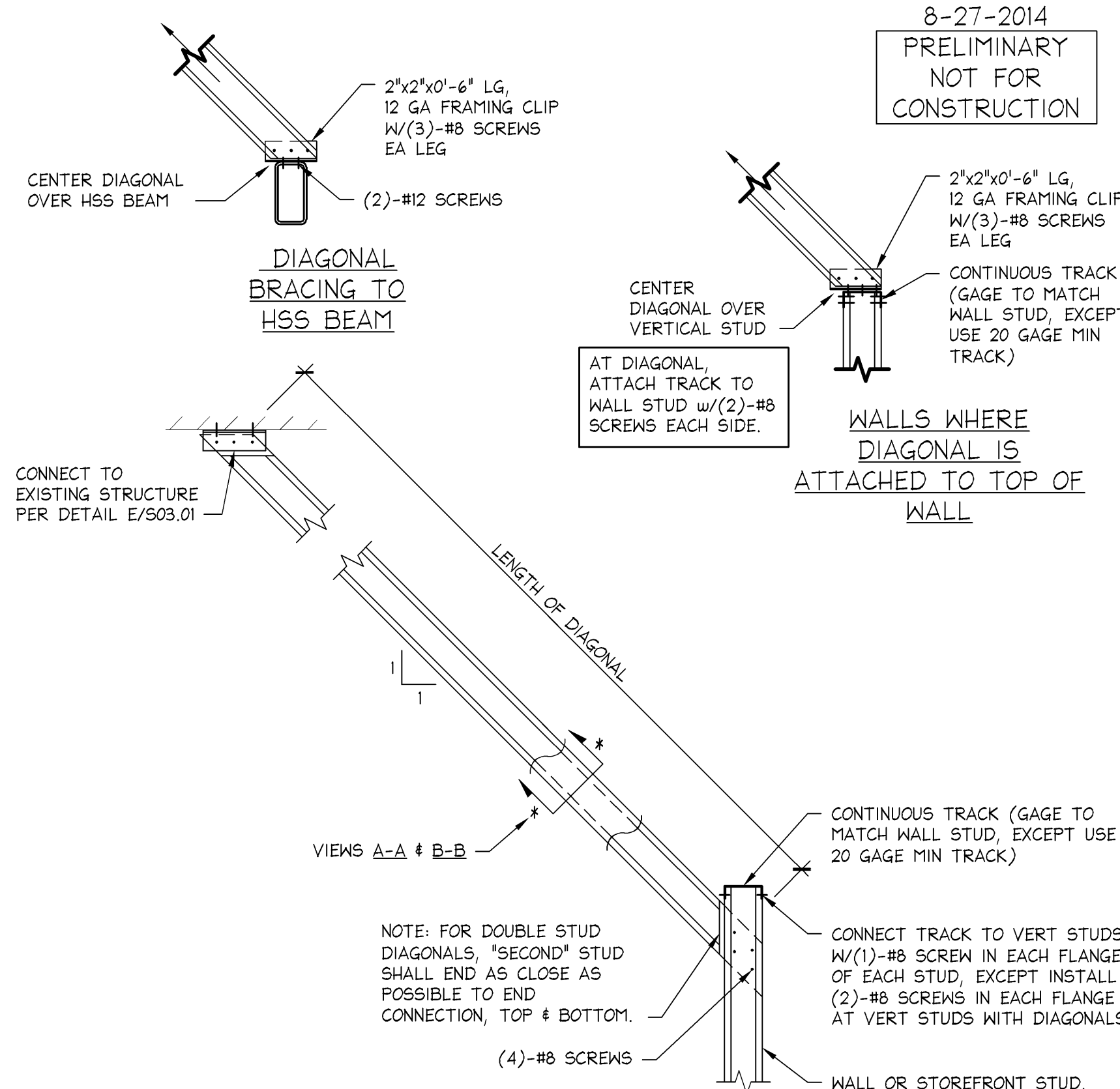
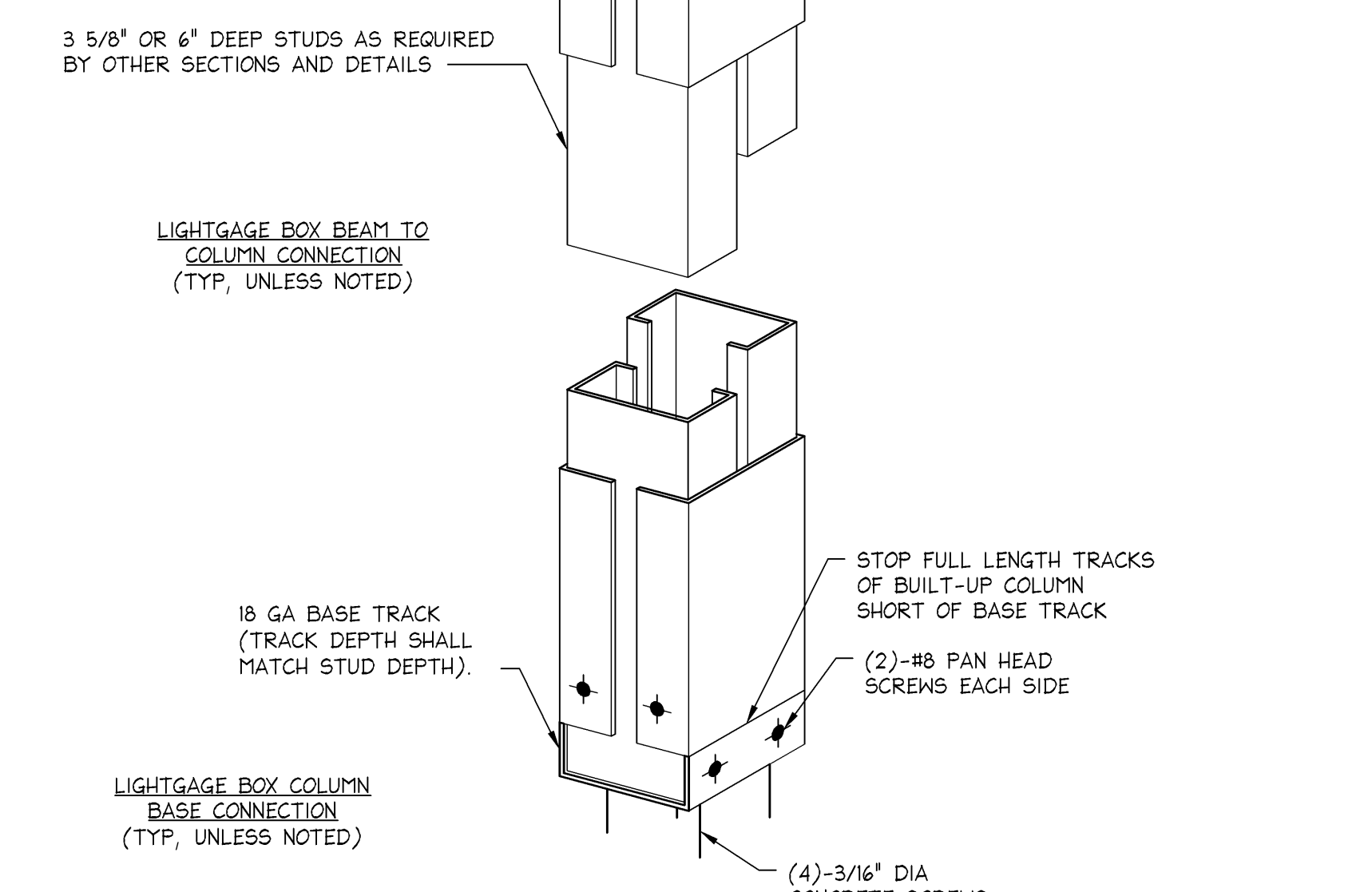
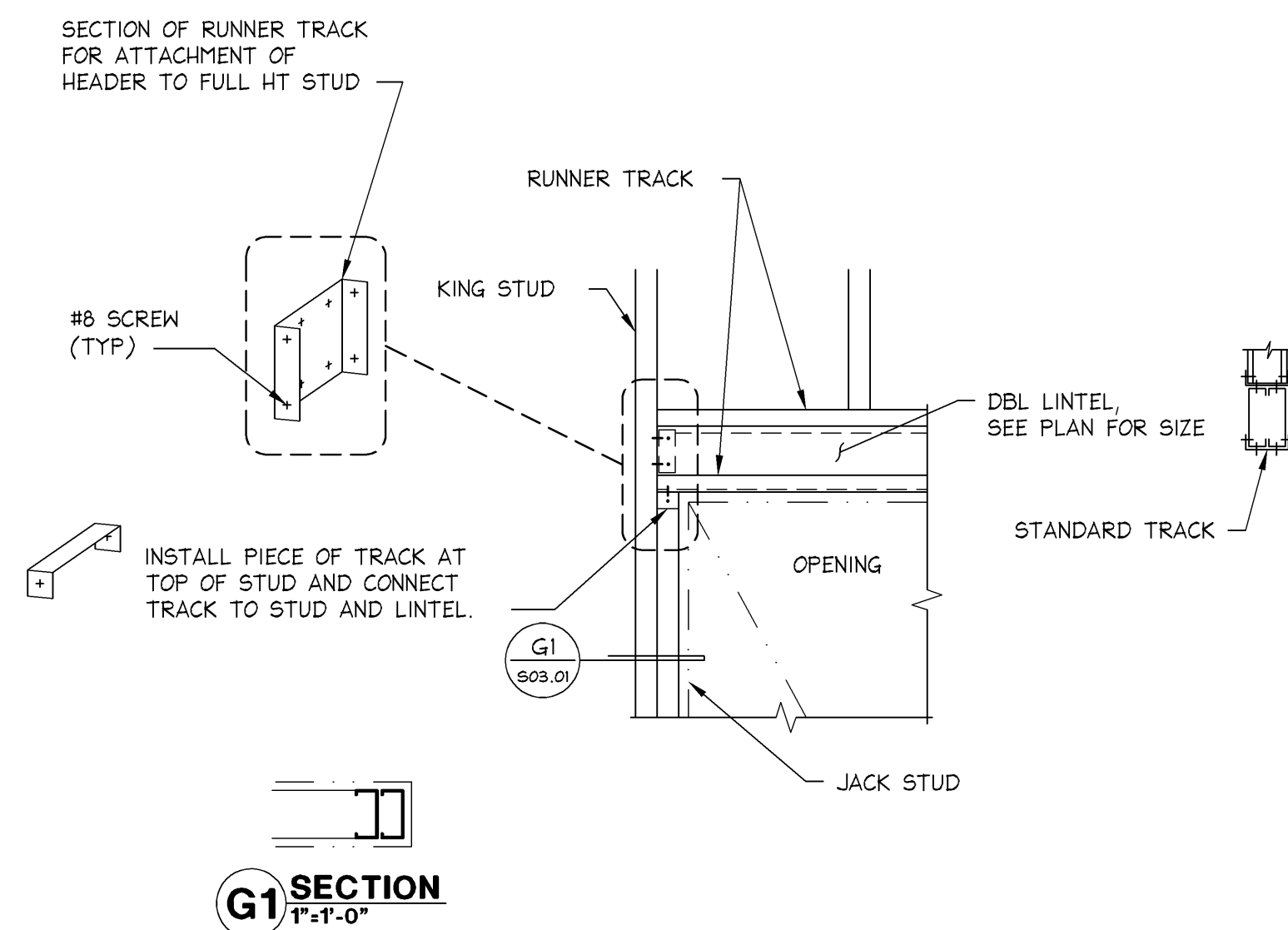
J

# TYPICAL DIAGONAL BRACE CONNECTIONS CAST-IN-PLACE, PRESTRESSED OR POST TENSIONED CONC

1 1/2" = 1'-0"  
00D-S031-E03-BRAC  
09.24.12

# TYPICAL DIAGONAL BRACING SEISMIC DESIGN CATEGORY C

1" = 1'-0"  
05D-S031-A02-BRAC  
10.15.12



PAUL J FORD AND COMPANY  
250 EAST BROAD STREET  
SUITE 600  
COLUMBUS, OHIO 43215  
614-221-6679  
A65714-0018

Limitedbrands  
LIMITED STORE PLANNING, INC.  
d/b/a STORE DESIGN & CONSTRUCTION  
Three Limited Parkway • Columbus, Ohio 43230  
Telephone: 614.415.7000 • Fax: 614.415.7349

THESE DRAWINGS AND SPECIFICATIONS ARE THE PROPERTY OF LIMITED BRANDS, INC. (LBI). THEY ARE TO BE USED ONLY FOR THE PROJECT AND SITE SPECIFICALLY IDENTIFIED HEREON. ANY REUSE, REPRODUCTION, OR MODIFICATION OF THESE DRAWINGS AND SPECIFICATIONS WITHOUT THE WRITTEN PERMISSION OF LBI IS PROHIBITED. LBI ASSUMES NO LIABILITY FOR ANY ERRORS OR OMISSIONS. THE USER ASSUMES ALL LIABILITY FOR THE ACCURACY AND COMPLETENESS OF THESE DRAWINGS AND SPECIFICATIONS. THE USER SHALL INDEMNIFY AND HOLD LBI HARMLESS FROM ANY AND ALL CLAIMS, DAMAGES, LOSSES, AND EXPENSES, INCLUDING ATTORNEY'S FEES, ARISING OUT OF OR RESULTING FROM THE USE OF THESE DRAWINGS AND SPECIFICATIONS. THIS AGREEMENT SHALL BE GOVERNED BY THE LAWS OF THE STATE OF OHIO. IN WITNESS WHEREOF, THE PARTIES HAVE HEREUNTO SIGNED AND AFFIRMED THE VERACITY OF THESE DRAWINGS AND SPECIFICATIONS. PAUL J. FORD, OWNER, PAUL J. FORD AND COMPANY. DATE: 08/22/14.

PROJECT INFORMATION:  
010501726  
PINK VICTORIA'S SECRET  
FAYETTE MALL  
5401 NICHOLASVILLE RD  
SUITE 100  
LEXINGTON, KY 40503  
NEW PACKAGE: 00062007  
PINK GENERATION: A/E PROJECT #:  
151534  
20140334  
DESIGN TYPE: LSDAC PROJECT #:

REVISIONS:  
DATE: 08/22/14  
DESIGNED BY: SLH  
DRAWN BY: RLA  
CHECKED BY: GDK

DATE ISSUED: 09-05-2014  
DESIGNED BY: SLH  
DRAWN BY: RLA  
CHECKED BY: GDK

STRUCTURAL  
CONSTRUCTION  
DETAILS

DRAWING NUMBER:  
S03.01